


## Rat SCF Protein, His tag

Cat #: PRP1240

Size: 5µg/20µg/100µg/1mg

### Product Information

	<b>Product Name:</b> Rat SCF Protein, His tag		
<b>REF</b>	<b>Catalog Number:</b> PRP1240	<b>LOT</b>	<b>Lot Number:</b> Refer to product label
	<b>Purity:</b> > 99 % as determined by SDS-PAGE		
	<b>Storage:</b> Store at -20°C		<b>Preparation method:</b> <i>E. coli</i>
	<b>Shipping:</b> The product is shipped at ambient temperature.		

**Background:** Stem cell factor (SCF), as a key ligand of KIT, regulates cell survival, proliferation, hematopoiesis, stem cell maintenance, gametogenesis, mast cell development, migration, and melanogenesis. Binding to KIT activates signaling pathways involving phosphorylation events, key kinases (AKT1, RAS, RAF1, MAPK1/ERK2, MAPK3/ERK1), STAT family members, and PLCG1. SCF Protein, Rat (His) is the recombinant rat-derived SCF protein, expressed by *E. coli* with C-6\*His labeled tag.

**Sequence:** Amino acid sequence derived from Recombinant Rat SCF Protein P21581-1 (Q26-A189) was expressed.

**Protein length:** The Recombinant Rat SCF Protein consists of 170 amino acids and predicts a molecular mass of 18.47KDa

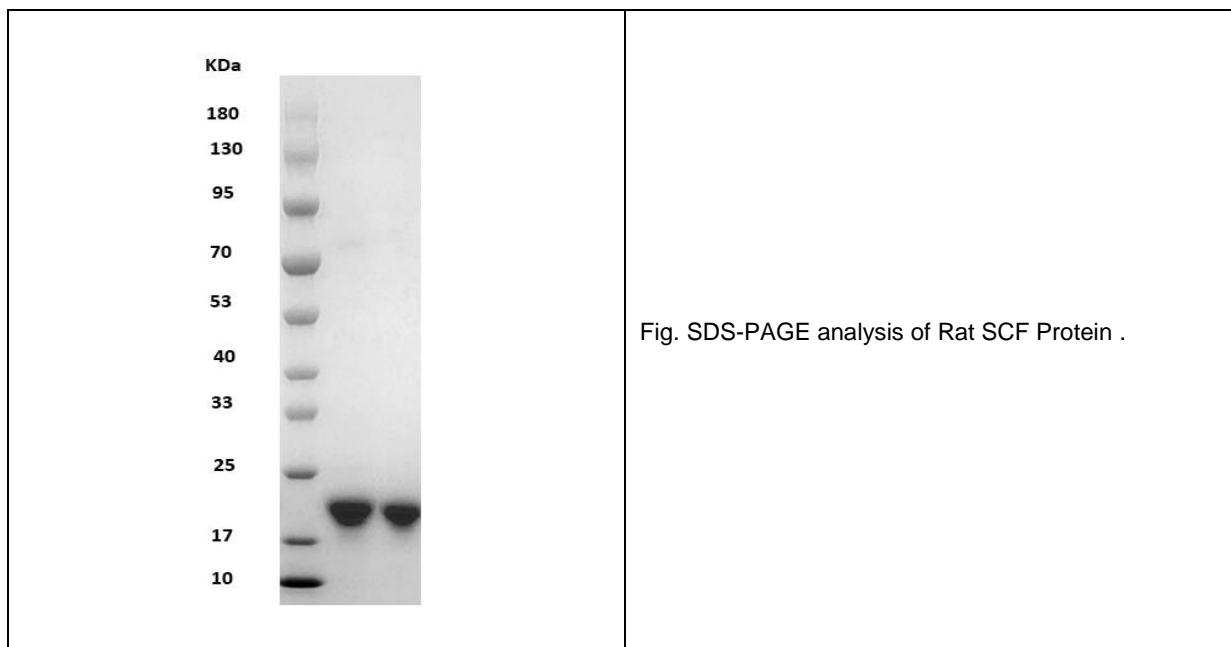
**Biological Activity:** Testing in progress.

**Endotoxin:** < 1.0 EU per µg of the protein as determined by the LAL method.

**Formulation:** Lyophilized from sterile 20 mM Tris with 150 mM NaCl, pH 7.4.

**Storage Instructions:** Lyophilized Recombinant Rat SCF Protein product should be stored desiccated below -20°C. Upon reconstitution, the protein should be stored at 4°C between 2-7 days and for future use below -20°C. For long term storage it is recommended to add a carrier protein (0.1% HSA or BSA). Please prevent freeze-thaw cycles.

**Usage notes:** Always centrifuge tubes before opening. It is recommended to reconstitute the lyophilized Recombinant Rat SCF Protein using the buffer we provided not less than 100µg/ml, which can then be further diluted to other aqueous solutions.



**Note:** The product listed herein is for research use only and is not intended for use in human or clinical diagnosis. Suggested applications of our products are not recommendations to use our products in violation of any patent or as a license. We cannot be responsible for patent infringements or other violations that may occur with the use of this product.